

## *Other Programs Available*

**Speech/OT Kids** is the therapeutic private practice of Crisler Lovendahl, M.A., CCC-SLP, and her associates. Therapists specialize in Sensory Integration and Related Disorders, including Oral Motor/Feeding/Apraxia therapy.

**Classroom Connection** consultants strive to integrate and balance the many aspects of a child's educational and developmental programming. Through team collaboration and problem-solving, each child's program is individualized with custom-made materials in eight domains including: personal-social, self-help, fine and gross motor, auditory comprehension, and expressive language, cognitive/academic, and cultural literacy.

**The North Shore Teen Center** is a program for Teens and Tweens to practice independent social and leisure activities, workout routines, snack preparation and community skills, take classes and complete homework.

**The Clinical Consortium** is a professional collaboration located in Bannockburn which provides the opportunity for master therapists to treat in a trans-disciplinary environment, thus enhancing collaboration and problem-solving.

These innovative programs were designed by Cris Lovendahl and Kari Becker to create a triad of service options addressing play, communication, and learning in the clinic, home, classroom and camp settings.



## **PLAY PARTNERS**

**2225-2227 Lakeside Drive  
Bannockburn, IL 60015**

**Phone: 847-234-0688**

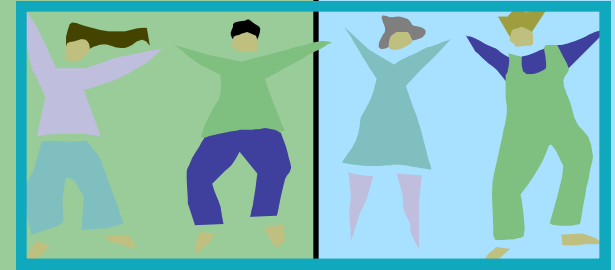
**Fax: 847-234-0687**

**Email:**

**samscx@gmail.com**

**www.theclinicalconnections.com**

## **PLAY PARTNERS**



Fostering the  
Social-  
Emotional  
well-being of  
children and  
their families

# THE PLAY PARTNERS VISION

Play Partners was created to train and supervise paraprofessionals to provide additional hours focused on social-emotional development at an affordable rate. Play Partners offers individual support in the home, clinic, school and camp settings. Facilitated play dates in the child's home, as well as Friendship Groups in the clinic, are encouraged.

Individualized goals typically focus on achieving regulation and mutual engagement through a range of emotions, circles of communication, and expression of symbolic and emotional ideas. Nurturing, playful obstruction, and intrusion may be used to foster robust self-concept, perspective-taking, and compliance across the child's expanding emotional range. Depending on each child's goals, intervention may be implemented in individual or group settings.

## Services

- Complementary Social Skills Screening
- Individual intervention in the home or clinic settings
- One-on-one aides in the school or camp settings
- Facilitation of home play dates
- Dyad or small group intervention in the clinic including: Friendship Groups, Social Motor and Alert Groups, and JamKids.
- Parent and Team Coaching/Training
- Utilization of a variety of philosophical approaches including DIR-Floortime, Theraplay, Social Thinking and Social Stories
- A variety of supportive methodologies may be incorporated including: sensory support, PECS/Aug Comm, Visual Schedules, Therapeutic Listening
- Development and Organization of Creative Playrooms in the home setting
- Coordination and collaboration with private and educational team members

## Additional Opportunities

- Free guest speaker nights with professionals in the field sharing information on their area of expertise
- Resource library with information on diagnosis, intervention and methodologies
- Facilitation of home programs
- Facilitation of Fast Forward programs
- Summer Camp Opportunities
- Winter and Spring Break Opportunities

